



Airdopes 501 ANC True Wireless Ear-buds

Get ready to immerse yourself in musical bliss with your very own pair of boAt Airdopes 501 ANC. Please consider this manual as your guiding map towards the unparalleled shores of musical bliss.

Knowledge of Bluetooth and device connectivity is essential for steering this boat and therefore we strongly recommend thorough reading of this manual; also, you may refer to the same at times when you face any sort of difficulty in future.

Package Contents

- 1. boAt Airdopes 501 ANC
- 2. Charging Case
- 3. Pair of Alternative Size Earplugs
- 4. Type-C Charging Cable
- 5. User Manual
- 6. Warranty Card
- 7. Catalogue Size Earplugs
- 8. T-FOC Card
- 9. Read Me Card

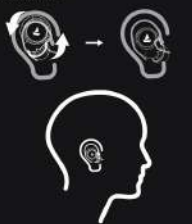
Overview

- 1. CTC (Capacitive Touch Control) / Power Button
- 2. Reset Button



In order to let your TWS earbuds deliver peak performance in the longer run and for the best detection to work smoothly, please follow the below mentioned steps and diagrams.

1. When placing the earbuds into your ears in listening position, one requires them to be gently pushed inside simultaneously with an arm, clockwise rotation.



2. DO'S & DON'T'S

For the most apt earbuds' listening positioning, keep the earbuds' face as shown below:

DO'S

Facing Slightly up



Facing up



DON'T'S

Facing Down



Facing Straight



Power On (First Time User):

Step 1: To switch the earbuds on, SmartPower ON simply open the lid of the charging case (see earbuds, see model, see 100% Charge Me Post-Technology enables the earbuds to power on automatically get connected and enter into the connection mode.

Step 2: Both the earbuds will automatically pair with each other. The earbuds will enter into the Connection Mode.



Connection Mode:

Step 1: Turn on the Bluetooth functionality on your phone/tablet device and scan.

Step 2: Search for Airdopes 501 ANC and pair accordingly.

Congratulations! Your earbuds are now connected successfully via Bluetooth.



Notes:

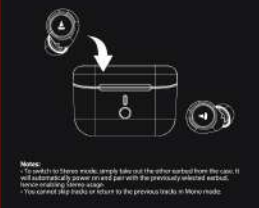
- Charging mode lasts for 3 minutes. If the pairing time is missed then you will need to reconnect the ear buds and follow the above mentioned steps.
- Airdopes 501 ANC cannot be previously connected devices (once switched on, the ear buds automatically connect to the previously connected device).

Single Earbud Usage

Step 1: Press code that both the earbuds can be used in mono mode. Use Smart Power On or Manual Power On for switching on the desired earbud.

Step 2: The selected earbud will automatically enter the connection mode.

Step 3: Turn on Bluetooth on your phone/tablet device and search for Airdopes 501 ANC to connect.



Notes:

- To switch to stereo mode, simply take out the other earbud from the case. It will automatically connect to and pair with the previously selected earbud, when entering mono mode.
- You cannot flip buds to return to the previous tracks in mono mode.

Functionalities

3 Seconds: Long touch CTC on left earbud for 3 seconds to activate noise assistant.

3 Seconds: Long touch both CTC for 3 seconds to manually power on.

8 Seconds: Long touch both CTC for 8 seconds to manually power off.

Charge the Earbuds:

Step: Please insert the earbuds back inside the charging case in correct orientation.

Note: Before using the ear buds for the first time, it is recommended to fully charge the ear buds. Also, please keep the lid of the charging case closed while charging.

Charge The Case:

Step: To charge the case, plug one end of the provided cable into the case and connect the other end to a computer's wall adapter, powerbank, etc.

Case	Normal Mode (Type C Charging Cable)	Charging Mode
Availability	Not ready to receive the signals for the LED indicator light.	LED shows the charging status (charge rate, LED breathing blue light)
LEDs (LED Indicators)	LEDs (Red/Green) are not illuminated (the charging cable is not plugged).	LEDs (Red/Green) are illuminated (the charging cable is plugged).
Powerbank, etc. battery	LEDs (Red/Green) are not illuminated (the charging cable is not plugged).	LEDs (Red/Green) are illuminated (the charging cable is plugged).

Note: To troubleshoot and reset the earbuds, you may perform the Factory Reset. Case LED Indication about inserting earbud into the case. This is to indicate that it is charging from the case. (Below table shown):

- Indicate with YELLOW for LED for 3 seconds
- FLASHES for LED for 3 seconds
- Flash to properly charged CYAN for 5 seconds
- LED Charge: When battery is fully charged, it gets indicated by solid green LED.

Basic Functions:

Active Noise Cancellation: Long touch the right CTC for 3 seconds to switch between different modes, ANC mode/ambient Mode/BEAT Mode/Normal Mode.

ANC Mode: - Now you can cancel out the noise by noise and let yourself fully immerse in the songs that excite your pleasure. The Active Noise Cancellation helps you stay in your zone!

Ambient Mode: - Now you can stay mindful of your surroundings even while the songs are on play. The Ambient Mode provides transparency of the sounds around you.

BEAT Mode: - Made for the Gamers, Be Gamers, BEAT Mode reduces the latency significantly and improves the overall gaming experience.

Voice Assistant: Long touch the CTC on left earbud for 3 seconds to activate the voice assistant.

Answer Call: Single tap the CTC on either earbud to answer incoming calls.

Power Note: The earbuds come equipped with ear flap Technology that only down the earbuds noise and lets you be heard crystal clear over noise calls.

Hang Up Call: Double tap the CTC on either earbud to report incoming calls.

Repeat Call: Double tap the CTC on either earbud to repeat incoming calls.

Play/Pause Music: Single tap the CTC on either earbud.

Next: For playback, use right earbud effect the In-Ear Detection functionality. To pause tracks, simply tap the right earbud from the ear, always double tap to play the next songs, single tap the right earbud back to make the current playing continues.

Next Track: When playing music, double tap the right CTC to skip to the next song.

Previous Track: When playing music, double tap the left CTC to return to the previous song.

Voice Assistant:

Step 1: Long touch the CTC on left earbud for 3 seconds to activate the voice assistant.

Step 2: The respective voice assistant screen pops up and you may place your commands at ease.

Tips: You may try the following commands:

- WMS: the weather?
- Play a song
- Set a reminder

Smart Power Off

Step 1: After usage, remove both the earbuds from your ears.

Step 2: Place the earbuds back into the charging case in correct orientation and close the lid.

Step 3: The earbuds will automatically switch-off [end enter into]

Manual Power Off

Step 1: Long touch both CTCs for 8 seconds to manually power off the earbuds.

Step 2: Once the earbuds get turned off, place them back inside the case and close them.

Factory Reset:

Perform the Factory Reset in case you face any difficulty while operating your Airdopes 501 ANC.

NOTE: Before performing reset, close "Airdopes 501 ANC" from pairing device history by forgetting device.

Step 1: Place the earbuds inside the case.

Step 2: While the earbuds are inside the case, long press the Reset Button for 30 seconds until LED (blinks on the charging Case LED) shows the LED lights.

Step 3: Perform a fresh connection attempt again and enjoy!

Congratulations! Your Airdopes 501 ANC has been reset.

Troubleshooting

Potential Problem	Solution
It can't connect to my device	Try pairing to another device
It cannot connect to a computer or mobile	Restart the device first
Earbuds disconnect during music play	Check the earbuds or perform the Factory Reset
Find an alternative in case	Place the earbuds back into the charging case and close them again to connect manually later
Flash earbuds don't work as expected	Make sure usage, headphones & computer are all fully charged and the phone is not connected to any other device only

Warning:

- Please follow the instructions to operate
- Please don't use the ear buds to extreme temperatures
- Please don't use the product near water
- Please keep the product away from heat sources, as the heat may damage it
- Don't put the ear buds back as charge port, USB port, etc.
- It is recommended to utilize the product below the maximum volume in order to protect hearing and extend the ear buds' service life.

Rechargeable: The earbuds start at a 100% volume and it may need to be recharged when they are used for an hour. This can be done by using the phone's media device.

Specifications

Headphone Type	ANC True Earbuds
Bluetooth Version	5.2
Water Resistance	IPX4
Call Technology	Yes
ANC	Hybrid ANC (up to 35dB)
Dual Microphones	Yes
Wear Profiles	Up to 3 set per charge. Up to 2 set available with Case
Latency	Low
Charging Technology	ASAP Fast Charge
Transmission Range	10m
Driver Size	10mm
Bluetooth Profiles	HFP, HSP, A2DP, AVRCP
Frequency	20KHz - 20KHz
Battery	50mAh Case (90mAh) 1 Earbuds
Charging Time	1.5 - 2.5 Hours
Charging Interface	Type-C

Charging norms & Precautionary Guidelines:

- 1) Charger/PC/Laptop Cable/PS
- 2) 5V 2A Standard Cable (20 strands, ø1.0mm diameter, strand)

Any other accessory can be paired up with the product as long as the specifications are met above norms.