

BLITZ 2000 PRO



USER MANUAL

BLITZ 2000 PRO

Thank you for choosing the boAt Blitz 2000 Pro. You are now just a step away from the realm of Nirvana. With a powerful 160W RMS total output, this speaker brings every aspect of entertainment. You can stay plugged into the sound with Bluetooth wireless technology. The 4.1 Channel multimedia speaker has been designed for a smooth interface requiring minimal effort and supports AUX, USB, SD, and FM. It's time to delve deeper into Nirvana. Allow this manual to guide you through the functioning of your speakers.



PACKAGE CONTAINS:

- 1X Subwoofer
- 1X AUX Cable
- 1X Remote Control
- 1x Product Catalogue
- 4X Satellite Speakers
- 1X User Manual
- 1X Warranty Card
- 1X FM Antenna Cable

SAFETY & WARNINGS

To reduce the risk of electric shock, do not dismantle the product and do not expose the apparatus to rain or moisture. The unit has no user-serviceable parts inside. Refer servicing to qualified personnel only.

⚠ The lightning flash within an equilateral triangle is intended to alert you to the presence of uninsulated dangerous voltage within the product's enclosure that may be of sufficient magnitude to constitute an electric shock to a person or persons.

⚠ Important! This symbol alerts you to read and observe important warnings and instructions on the unit or in this manual.

Notice:

This appliance is not intended for use by persons (including children) with reduced physical sensory or mental capabilities, or lack of experience and knowledge, unless they have been given supervision or instruction concerning use of the appliance by a person responsible for their safety. Children should be supervised to ensure that they do not play with the appliance.

- To prevent possible hearing damage, do not listen at high volume levels for long periods of time or a sudden high volume level.
- Never use the device unsupervised! Switch off the device whenever you are not using it, even if not using it only for a short while.
- The appliance is not intended to be operated by means of an external timer or separate remote controller system.
- If the power supply cord is damaged, it must be replaced by the manufacturer, its service agent or similarly qualified persons in order to avoid a hazard.
- Before operating this system, check the voltage of this system to see if it is identical to the voltage of your local power supply.

6. The unit should not be impeded by covering the ventilation opening with items such as newspaper, table-cloths, curtains etc. Make sure that there are at least 20 cm of space above and at least 5 cm of space on each side of the unit.

7. The apparatus must not be exposed to dripping or splashing. Do not place objects filled with liquids such as vases, bottles or humidifiers on the unit.

8. To prevent fire or shock hazard, do not expose this equipment to direct heat, rain, moisture or dust.

9. Do not place this unit near any water sources e.g. taps, bathtubs, washing machines or swimming pools. Ensure that you place the unit on a dry, stable surface.

10. Do not place this unit close to a strong magnetic field.

11. Do not place the unit on an amplifier or a receiver.

12. Do not place this unit in a damp area as the moisture will affect the life of electric components.

13. Do not attempt to clean the unit with chemical solvents as this might damage the finish. Wipe with a clean, dry or slightly damp cloth.

14. When removing the power plug from the wall outlet, always pull directly on the plug, never pull on the cord.

15. Depending on the electromagnetic waves used by a television broadcast, if a TV is turned on near this unit while it is also on, lines might appear on the LED TV. Neither this unit nor the TV is malfunctioning. If you see such lines, keep this unit well away from the TV set.

16. The mains plug is used to disconnect the device, the disconnected device should remain readily operable.

IMPORTANT SAFETY INSTRUCTIONS

- Read these instructions. Keep these instructions. Follow all instructions. Heed all warnings.
- Do not use this apparatus near water.
- Clean only with a dry cloth.
- Do not block any ventilation openings. Install in accordance with the manufacturer's instructions.
- Do not install near any heat sources such as radiators, heaters, stoves, or other devices (including amplifiers) that produce heat.
- Do not ignore the safety measures of a polarized or grounding-type plug. A polarized plug has two blades with one wider than the other.
- Protect the power cord from being walked on or pinched. Pay special attention to the positioning of cords, plugs, power sockets especially the point where they exit from the unit.
- Only use attachments/accessories specified by the manufacturer.

9. Unplug this apparatus during lightning storms or when not in use.

10. Refer all servicing to qualified service personnel. Servicing is required when the apparatus has been damaged in any way, for example, when the power-supply cord or plug is damaged, liquid has been spilled or objects have fallen into the apparatus, the apparatus has been exposed to rain or moisture, does not operate normally, or has been dropped.

11. The AC plug is used to disconnect the device, the disconnected device should remain readily operable in order to disconnect the apparatus from the AC power completely, the AC plug must be removed from the AC outlet completely.

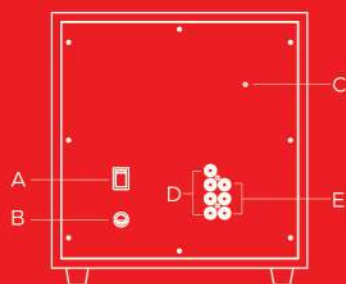
SUBWOOFER FRONT CONTROL PANEL

- Mode Button: Single tap to switch playback mode among BT/USB/S-D/FM/AUX modes
- Volume -: Tap to decrease volume
- Volume + : Tap to increase volume
- USB Input: USB port
- SD Input: SD Card port
- Previous Button: Single tap to go to previous song on the play list or previous FM channel
- Play/Pause Button:
 - Single tap to Play or Pause the playback
 - In FM mode, long-press to auto-search channels, short-press to stop auto-search.
 - In Bluetooth mode, long press to disconnect and clear Bluetooth memory.
- Next Button: Single tap to go to next song on the play list or next FM channels

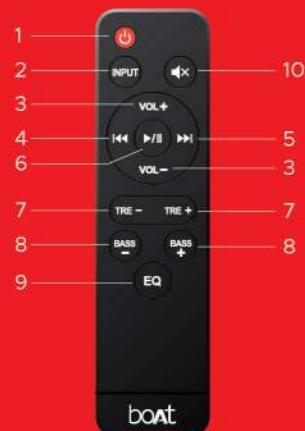


SUBWOOFER REAR PANEL

- A. Power On/Off Switch.
- B. Power Input.
- C. FM Antenna.
- D. Stereo Input: RCA connectors to take input from external audio source.
- E. Stereo Output: Front Left & Front Right.



REMOTE CONTROL



- Power Button : Standby mode for Power ON/OFF
- Input: Switch among input modes: USB; SD; FM; AUX; BT
- Volume +/- : Increase/Decrease the volume.
- Previous Button : In Bluetooth mode short press for previous song; in USB/SD mode short press for previous song and long press for fast backward.
- Next Button : In Bluetooth mode short press for next song, in USB/SD mode short press for next song and long press for fast forward
- Play/Pause: In USB/SD mode short press to play/Pause. In Bluetooth mode, short press to play/pause, long press to disconnect Bluetooth and clear Bluetooth memory. In Aux mode, short press to mute/unmute. In FM mode, short press to press/pause, long press to auto search channels
- TRE +/- : Increase/Decrease the treble.
- BASS +/- : Increase/Decrease the Bass
- EQ : Press to switch EQs
- Mute : Press to mute the sound

NOTE: "◀▶" buttons don't work in the AUX mode, you can change tracks via the connected media device under AUX mode.

Setting Up Blitz 2000 Pro

- Plug the cable of the satellite speakers into the output jack on the rear panel of the subwoofer.
- The audio cable has to be plugged into the input jack on the rear panel of the subwoofer for the AUX mode.
- Plug the power cord into the power socket and switch on the unit, the front panel LED lights up in red and the unit automatically enters into Bluetooth mode
- You can use the volume buttons on the remote controller or the subwoofer to control the volume levels
- You can control the bass/treble via the remote controller
- You can press the Mode button on subwoofer or Input button on the remote controller to cycle through BT, AUX, USB, SD Card and FM modes.

Note:
Please connect FM antenna for better FM reception. The quality of FM radio depends on the FM reception in your area.

BLUETOOTH CONNECTIVITY / PAIRING

- To switch to Bluetooth mode, turn on the Bluetooth functionality on your phone or media device
- Search for "Blitz 2000 Pro" from the list of available devices nearby and select the same

IMPORTANT NOTES

- Never handle the power cord or its plug with wet hands when plugging or unplugging
- Ensure that the main power switch is in "OFF" state before connecting the power cord to the power supply in order to avoid damage to the unit
- Never use a power cord after it has been damaged as it can easily cause an electrical shock or fire hazard

TROUBLESHOOTING

- Question:** The device cannot find "Blitz 2000 Pro" on Bluetooth?
- Reason:** The speaker may not be in pairing mode.
- Solution:** Check by tapping the Mode button or restart the speaker to search again.

BLUETOOTH CONNECTIVITY / PAIRING

Model	boat Blitz 2000 Pro
Technology	Bluetooth; AUX; USB; FM
Drivers	6.5"4Ω60W*1 3"8Ω25W*4
Output Power	160W R.M.S
Frequency Response	40Hz-20KHz
Signal-to-Noise Ratio	≥65dB
BT Transmission Range	Up to 10m
Bluetooth	V5.0
Dimensions	Subwoofer: W252 x H270 x D289mm Satellite: W127 x H150 x D115mm

BLITZ 2000 PRO

